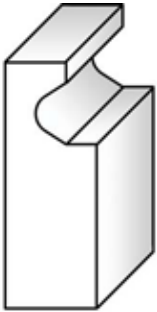




**PACIFIC COUNTER TOP PROFILES**

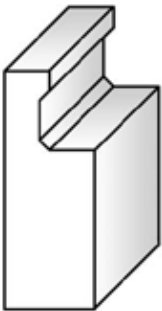
Pacific counter top profiles are made from reusable polyethylene. They are readily flexed for radius applications. All counter top profiles are 6" tall and 8' long and come packed 14 pieces per box. Corresponding touch-up edger tools are also available.



17-CT-1 Style 1 Counter Top Profile, 8' Section



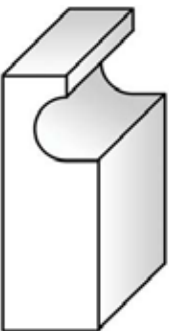
17-FT-CT-1 Style 1 Touch-up Tool



17-CT-2 Chamfer Counter Top Profile, 8' Section



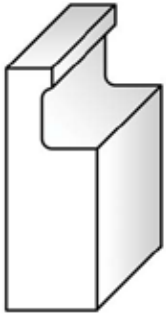
17-FT-CT-2 Chamfer Touch-up Tool



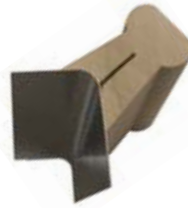
17-CT-3 Bullnose Counter Top Profile, 8' Section



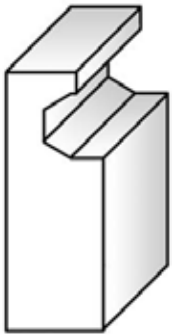
17-FT-CT-3 Bullnose Touch-up Tool



17-CT-4 Straight Counter Top Profile, 8' Section



17-FT-CT-4 Straight Touch-up Tool



17-CT-5 Bevel Counter Top Profile, 8' Section



17-FT-CT-5 Bevel Touch-up Tool